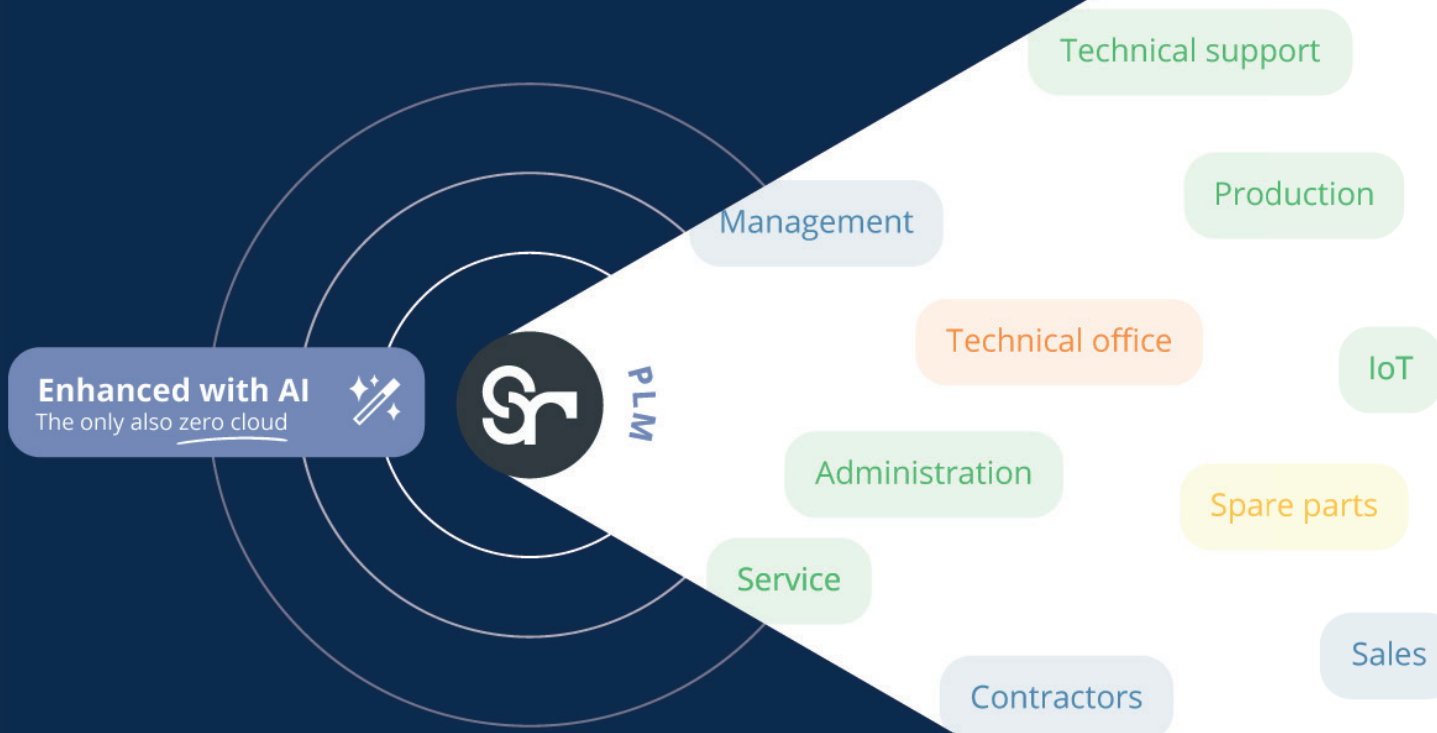


# SolidRules: everything your company needs.

An ecosystem that ranges from PDM, PLM, and technical-commercial product configurators, to Spare Parts Management, Ticketing, Service, Project Management, CRM, MES, AI, IoT, Costing, BI, and more... no, it never ends.



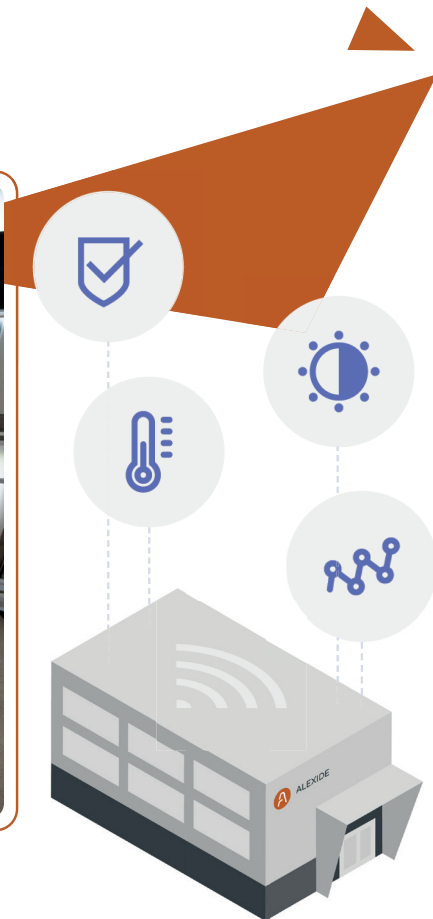
**Choose.**  
As many products as there are needs,  
or SolidRules.

# Our team

The Alexide team is made up of determined, optimistic, and visionary professionals who believe in the power of teamwork and the importance of thinking **outside the box**. We are united in our commitment to creating innovative solutions that exceed expectations and tackle challenges considered “impossible” by others.

With our software, SolidRules, we focus on a wide range of sectors, from **product configuration** to **production** and augmented reality, from **Big Data** to **IoT**. Our philosophy is to approach problems from new perspectives and find unconventional but remarkably effective solutions.

If you are looking for a partner who thinks outside the box and is ready to face any challenge with creativity and determination, the **Alexide team is here to help you**.



## Territorial Enhancement through a Network of Excellence

The expansion of a company is closely linked to the growth of the territory that hosts it. For this reason, we are proud to be founding members of the **Romagna IT District**. We actively collaborate with the **University of Bologna**, supporting the degree course in “**Information Systems Technologies**” and also serving as **trainers**. Furthermore, we are members of the **FITSTIC** Foundation’s **ITS Academy** and the Emilia Romagna **Clust-ER Innovate**, and we actively participate in various project work with higher education institutions.

# Alexide and AI ✨ for business automation

For years, we have dedicated ourselves to **Artificial Intelligence** (AI), initially introducing it in our headquarters and now in our product. AI thrives on data, and SolidRules stands out as a privileged manager capable of storing, managing, and analyzing **millions of documents** and **billions of data points**.

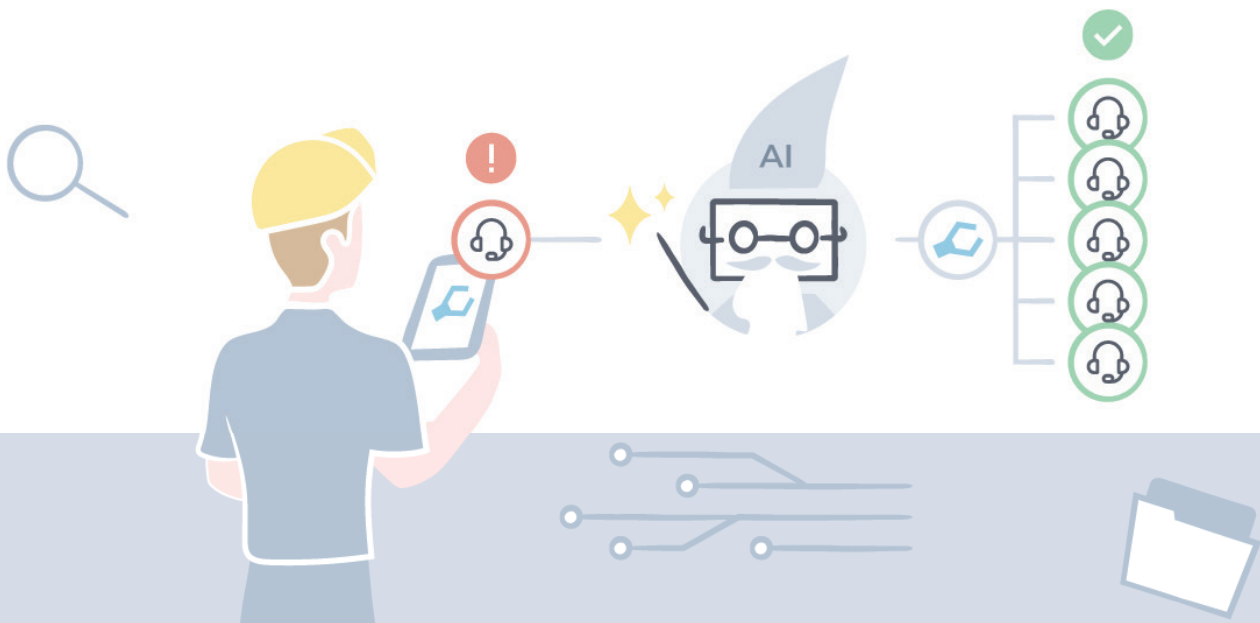
This is precisely why SolidRules is the **ideal ally** for integrating Artificial Intelligence into every business process.

With our **Business Intelligence** system combined with **Machine Learning**, we can assist companies in analyzing large volumes of data in real-time. This allows us to identify patterns and trends, facilitating informed decision-making and the automation of repetitive processes. This approach not only frees human resources for more creative and high-value tasks but also enables companies to quickly adapt to changing market conditions, thus gaining a competitive advantage.

We also operate through AI **models** that **work locally**, ensuring the security of confidential and strategic data without the need to transfer it to third parties.

With **SolidRules**, the **future is already a reality**, and its benefits extend to **all company departments!**

An example of SolidRules' functionalities? Imagine opening a **ticket**, and the SolidRules system is able to identify all **similar** tickets or direct you to the appropriate **manual page**, thereby increasing the effectiveness of support. And this is just the beginning of the potential offered by SolidRules.

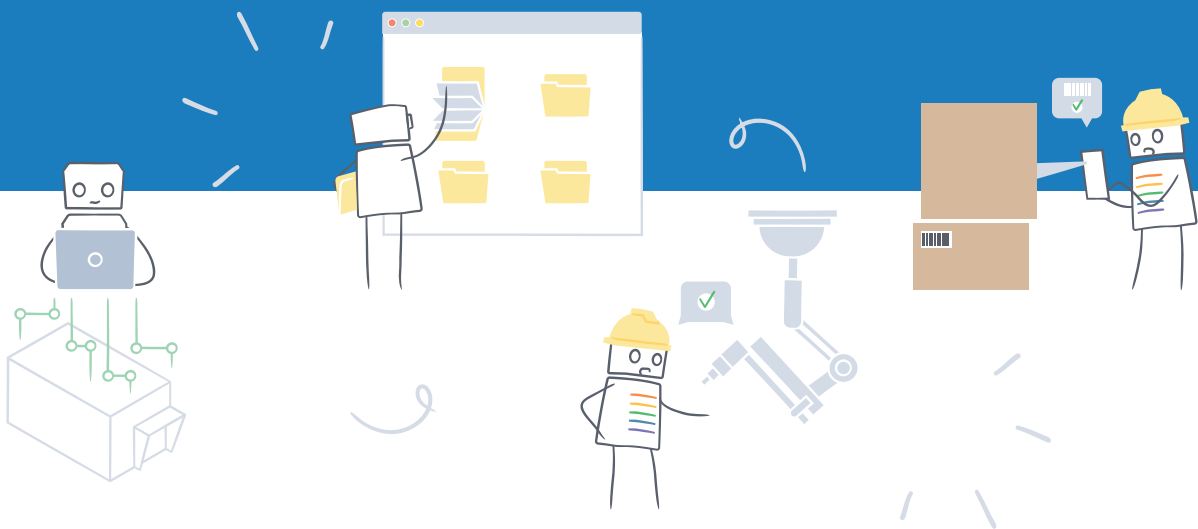


# Born to create solutions

What problems can SolidRules solve?

We would like to say all, but it's certainly not a magic solution. Here's what it can do:

- Prevent production downtime
- Eliminate design and production errors
- Solve the problem of storing, searching, and organizing documents. It can provide detailed data and statistics on the company's performance
- Stop the chaos of phone calls and misunderstandings between departments and any other issues related to business process management that affect management and individual divisions.



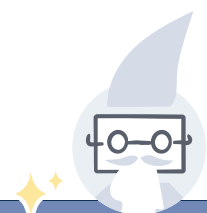
## It communicates with everything

Work with your **3D CAD** and **2D CAD**. You can find it within your **Office** tools, and we have connected it with over **50 different management software brands**.

## It applies to everything

You choose it to solve a problem and discover that it can **cover all the needs of your company**. From sales to design, through **production** and **after-sales**, every department will fall in love with SolidRules.

Created from experience in companies like yours, constantly improving!



Enhanced with AI

# The SolidRules suite never stops:



Configurator



InCentro



Desk



Quantum



Factum



Parts

## Some of the features you will love

Layout  
Configurator

Bom  
Configurator

CAD  
Configurator

Quote  
Configurator

PLM

CAD Management

Office Management

PDM

Document Management

CRM

Ticketing  
System

Quality  
System

MES

PMS

Service  
System

PLM

HR  
System

IoT

Smart  
Manufacturing

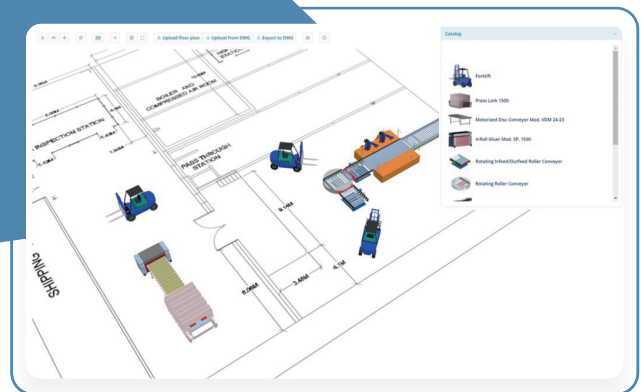
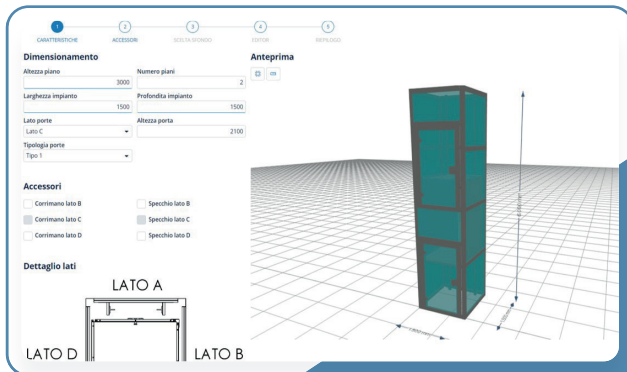
Industry 4.0

IIoT



# Configurator

Whatever your needs, the SolidRules **configurator** can become your most valuable **ally**.



## To configure the future

Configure your product in **3D** even on the **web**, for an **augmented reality** experience. Get today what others might dream of tomorrow.

## To configure documents

The right idea if you want to automate and manage all **company documents** (offers, technical specifications, change requests, catalogs, manuals, and non-conformities).

## 360° Configuration

Do you want to offer producible items, items that can be produced but never were, or special ones? This is the **product configuration solution** tailored to your needs.

## The configurable suite

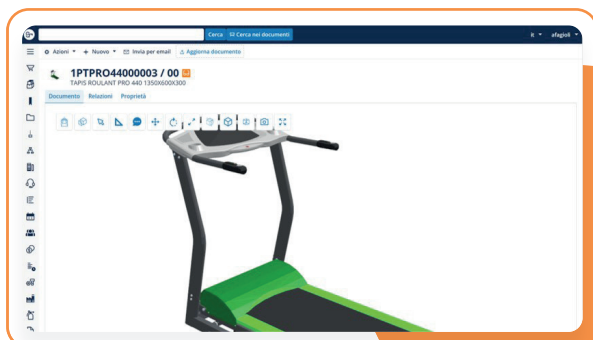
- Product configurator
- Sales configurator
- Layout configurator
- Bill of materials configurator
- Technical configurator
- Manual configurator



# InCentro



You install it, start it up, and **without** the need for complicated **implementations**, you will have **already solved** most of the problems that slow down your work on CAD.



Linee distinta

Regola di revisione  
Revisione indicata

|  | Livello | Posizione | Anteprima | Codice   | Rev. | Descrizione                          | Stato      | Esclusi | UM | Quantità | Dettagli |
|--|---------|-----------|-----------|----------|------|--------------------------------------|------------|---------|----|----------|----------|
|  | 1       | 1         |           | 14020405 | 00   | MONTAGGIO TELAIO BASE FISSO          | Rilasciato |         |    | 1        |          |
|  | 2       | 1         |           | 14010112 | 00   | TELAIO BASE FISSO                    | Rilasciato |         |    | 1        |          |
|  | 2       | 2         |           | 1CM20001 | 00   | GOMMATO DI APPoggio                  | Rilasciato |         |    | 6        |          |
|  | 2       | 3         |           | 1CM10016 | 00   | VITE UNI DREI M8x10                  | Rilasciato |         |    | 6        |          |
|  | 2       | 4         |           | 1CM20001 | 00   | SUPPORTO RUOTA DEL                   | Rilasciato |         |    | 2        |          |
|  | 2       | 5         |           | 1CM10001 | 00   | RUOTA DEL                            | Rilasciato |         |    | 2        |          |
|  | 2       | 6         |           | 1CM10008 | 00   | VITE TORX GO 1493 M8x10              | Rilasciato |         |    | 2        |          |
|  | 2       | 7         |           | 1CM11002 | 00   | CAPO ISO 634 M8                      | Rilasciato |         |    | 2        |          |
|  | 1       | 2         |           | 14010113 | 00   | SNODO TELAIO                         | Rilasciato |         |    | 1        |          |
|  | 1       | 3         |           | 14020505 | 01   | GRUPPO PULSANA PRO 400 VERSIONE 2018 | Rilasciato |         |    | 1        |          |
|  | 1       | 4         |           | 1CM00002 | 00   | MOTORE REGOLAZIONE INCLINAZIONE      | Rilasciato |         |    | 1        |          |
|  | 1       | 5         |           | 10940013 | 00   | MONITORIA CONSOLE PRO                | Rilasciato |         |    | 2        |          |

## A goldmine for the Technical Office

If your goal is to improve productivity and reduce production times while also minimizing errors and costs, then **SolidRules PDM** is essential to your business strategy.

## A wealth for all business departments

**SolidRules PLM** addresses the needs of the pre-sales and offer phase, project management and design, as well as assistance and service. It will be the center of gravity for your design and everything that revolves around it.

## At the heart of your company

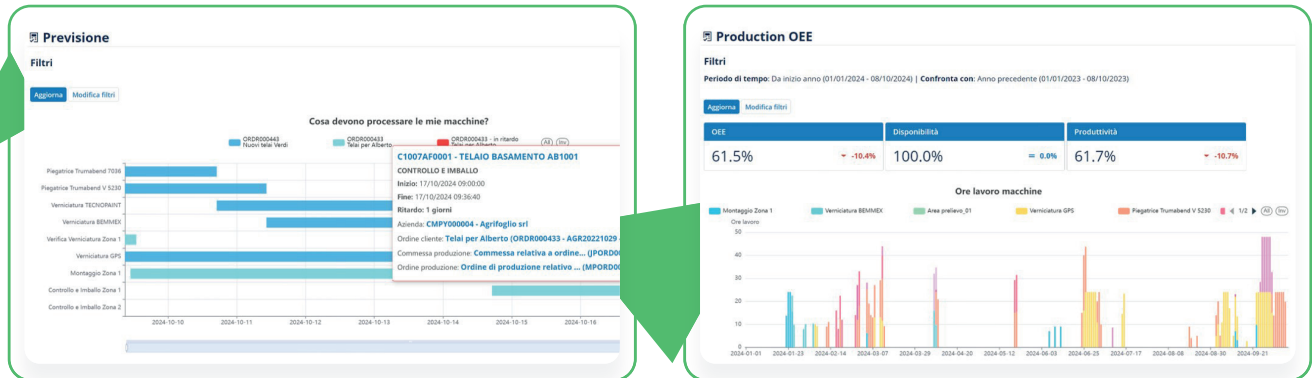
Not only at the center of your CAD and the product lifecycle but also at the center of all company documents, which can be presented in a simple and flexible **web interface** to distribute information to all **business departments**. On any device and through comprehensive authorization policies.

# Factum



Take your **production** to the next level!

The **Manufacturing Execution System** that also caters to custom orders and sampling. Maximize **efficiency**, minimize waste, control times, and automate processes.



## Production dashboards

Monitor all the most important data in **real-time** to evaluate production performance. This includes **OEE** (Overall Equipment Effectiveness), which measures productivity, availability, and quality.

## Order management

With **Gantt** indicators, you can determine if you can meet delivery times and how to reorganize shifts based on results. You can also rearrange **production orders** that are already in progress. If your priorities change, the system simulates new dates based on bills of materials, processing cycles, and other documents.

## Collaboration

Each operator manages the Start and End of work phases using various devices. However, the start and stop of phases can also come directly from the machines with the integration of **Quantum IoT**.

## Digitalization

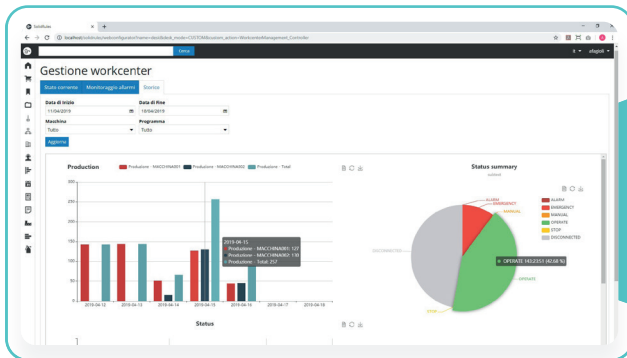
You can say **goodbye** to piles of **paper** because with Factum, you can view all documents such as PDFs, instructions, and 2D and 3D drawings directly from your phone, tablet, or PC.



# Quantum



For your factory, choose the **solution** that can **communicate** with your **machines** and your people in a practical, concrete, and innovative way.



Start your  
digital  
transformation!

## Big Data, IoT and much more

An **Artificial Intelligence** system capable of collecting and analyzing **billions of data** points from production sensors.  
The latest frontiers of innovation brought into your daily life.

## Real-time data

Real-time monitoring of all **machines**, from those in production to those delivered to your customers.

## From the past to the future

Data from the **IoT** is correlated with existing data on your **SolidRules Desk**. With its **Business Intelligence** tools, it analyzes all the information to highlight critical issues and opportunities.

## Autonomy has value

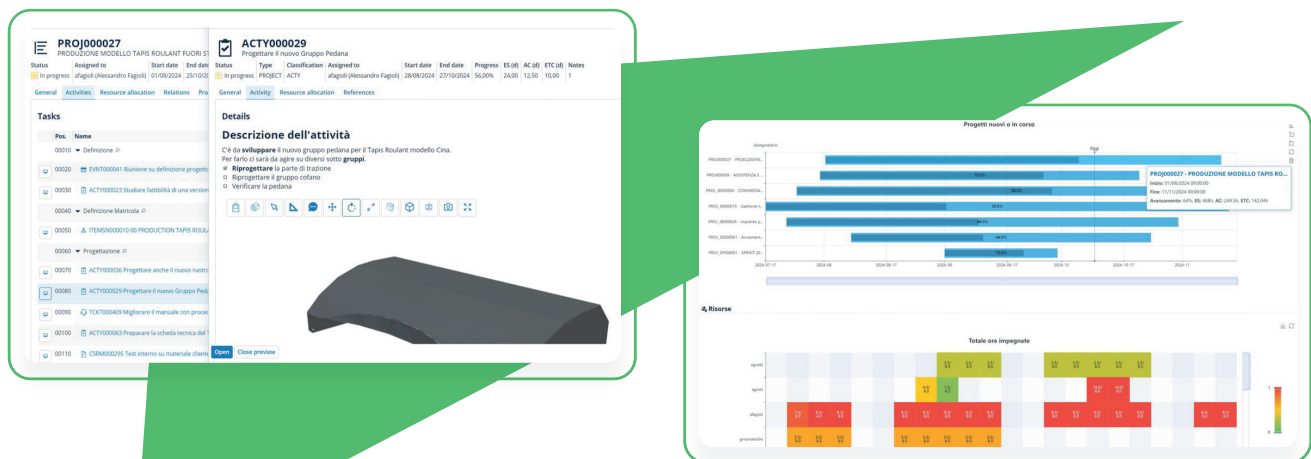
A **4.0 factory** management system that can operate with or without the Internet, with data in the cloud or stored locally, without needing to rely on third-party services. You can have **complete control** over your information.

# Desk



Simply Your Next **Company System**.

**One tool** to manage business opportunities, sales, support, maintenance, projects, safety, calendars, quality, and production.



## Your new Desk

Traditional systems were designed to manage homogeneous information and established relationships. Today, data is constantly changing, and you cannot know in advance what connections will form. Choose a **flexible system** that **adapts to the changes** in your company.

## An Out-of-the-Box Approach

What will surprise you most about SolidRules Desk is the effortless **naturalness** of its **approach**, where things are constructed, archived, and linked together without needing you to dictate it.

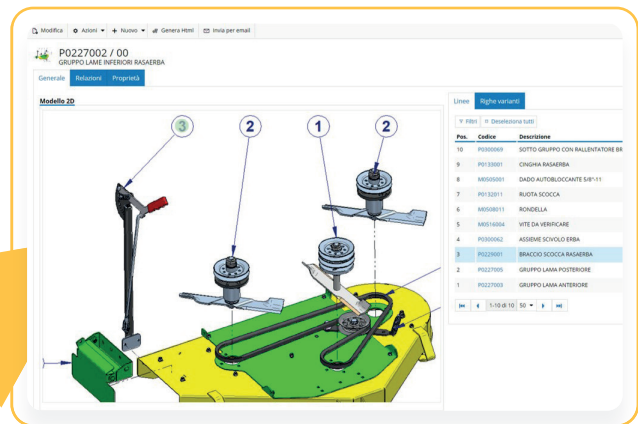
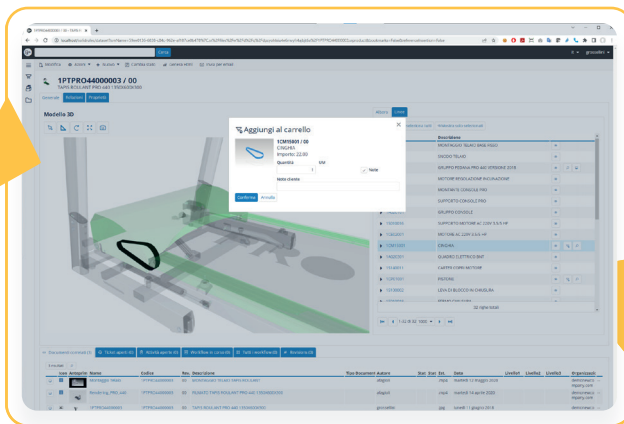
## Why choose a Company System

The secret to **greater efficiency** is organization and collaboration between departments. Having a single system that **simplifies** and **accelerates** procedures, keeps all information organized, and prevents human errors is the first step toward a company's success.



# Parts

It allows for the management of **spare parts** in 2D and 3D directly on the web. Would you like to select the spare part from the **drawing** or the **assembly** from your **CAD**? In some cases, it might be more convenient to choose it from the production order or the bill of materials? Stop worrying, because you can have everything you need.



## Dashboard for Spare Parts management

From the dashboard, you can see the requested **spare parts** as well as **tickets**, **documents**, and everything related to your spare parts, ensuring that you always have all the information at your fingertips.

## The cart

In the cart section, you can see the **currency**, **notes** entered by the customer or colleague, and the **shopping list**. The cart can quickly become an order or a quote to send with just one click.

## The catalog

You create a navigable **web preview** from CAD data. The user modifies or integrates the information, and once the spare parts catalog creation phase is complete, you can decide whether to publish it automatically on the web, on a USB stick, or on a CD.

## The configuration

The power that the SolidRules **configurator** offers to the pre-sales process is also reflected in the post-sales phase, ensuring **simple**, **powerful**, and extremely **flexible** management of spare parts.

# We are here for you.

Alexide srl  
Via Cristoforo Roda, 85  
Cesena FC 47522  
0547/323593  
info@alexide.com  
alexide.com



SolidRules®

Copyright Alexide srl. All rights reserved. The information contained in this brochure is the exclusive property of Alexide srl. Any reproduction, even partial, in any form or by any means, is prohibited by law without prior authorization from Alexide srl. As part of a policy of continuous improvement of products and services, Alexide srl reserves the right at any time to modify the information and specifications described. All names, products, and services mentioned herein are trademarks or registered trademarks of their respective companies and are the exclusive property of their rightful owners.